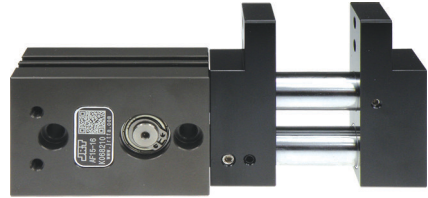




## 특징 (Character)

- RACK & PINION을 이용한 동기 구동방식  
Rack & pinion type
- JAW가 BODY기준 편측에 위치  
Jaw is located on one side of gripper body
- 회전 ARM 선단부착에 적합  
Suitable for attaching to rotation ARM rod thread
- 개폐검출 센서 전기종 부착가능  
Magnetic sensor is available for open-close sensing



## 랙 & 피니언 방식 (Rack & pinion type)

### 센서위치 (Positioning of sensor)

마그네틱 센서 부착가능  
for magnetic sensor

### 작동 방식 (Kinetics)

랙 & 피니언 방식  
pinion and toothed rack  
system, centric gripping

### 구동부 (Drive)

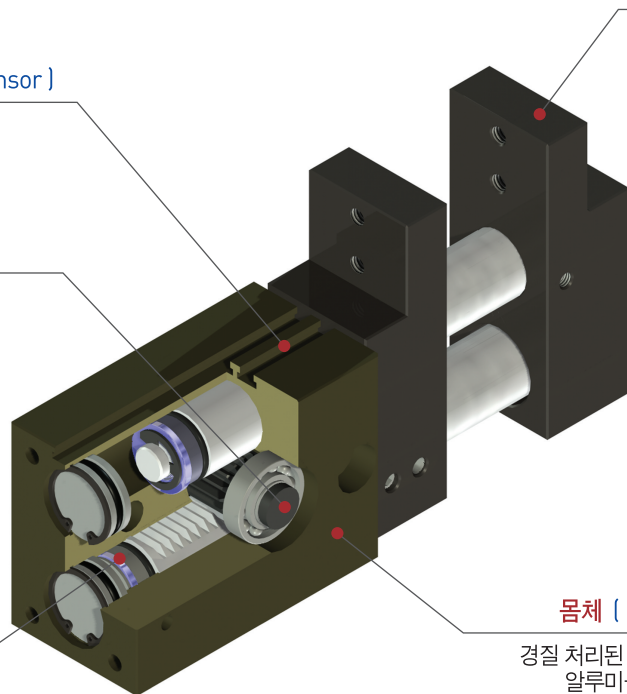
복동식  
double acting  
pneumatic cylinder

### 조 (Jaws)

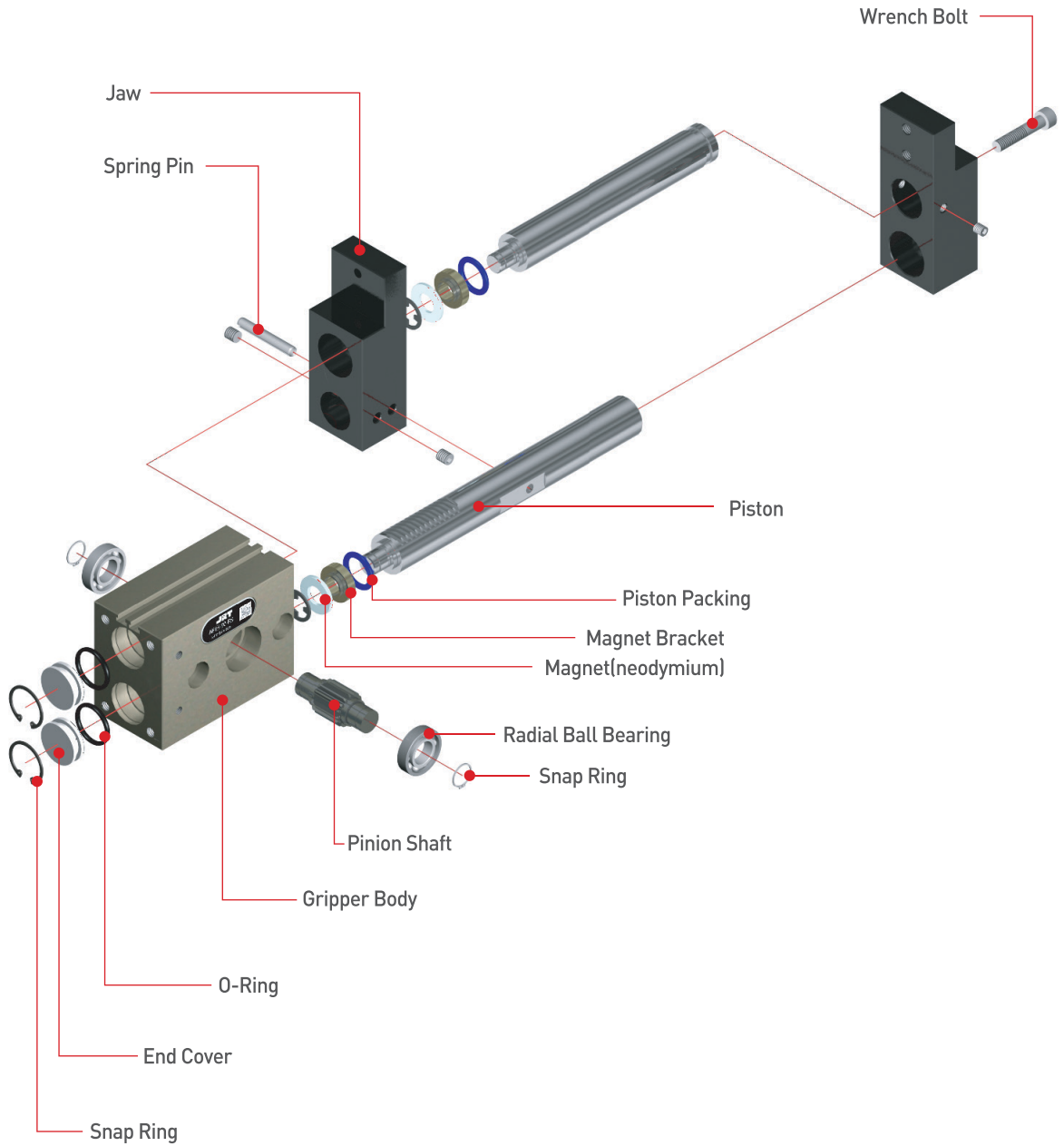
파지부  
for gripping

### 몸체 (Body)

경질 처리된 경량의  
알루미늄 합금  
high-tensile aluminum body  
lightest with possible because  
of hard anodizing

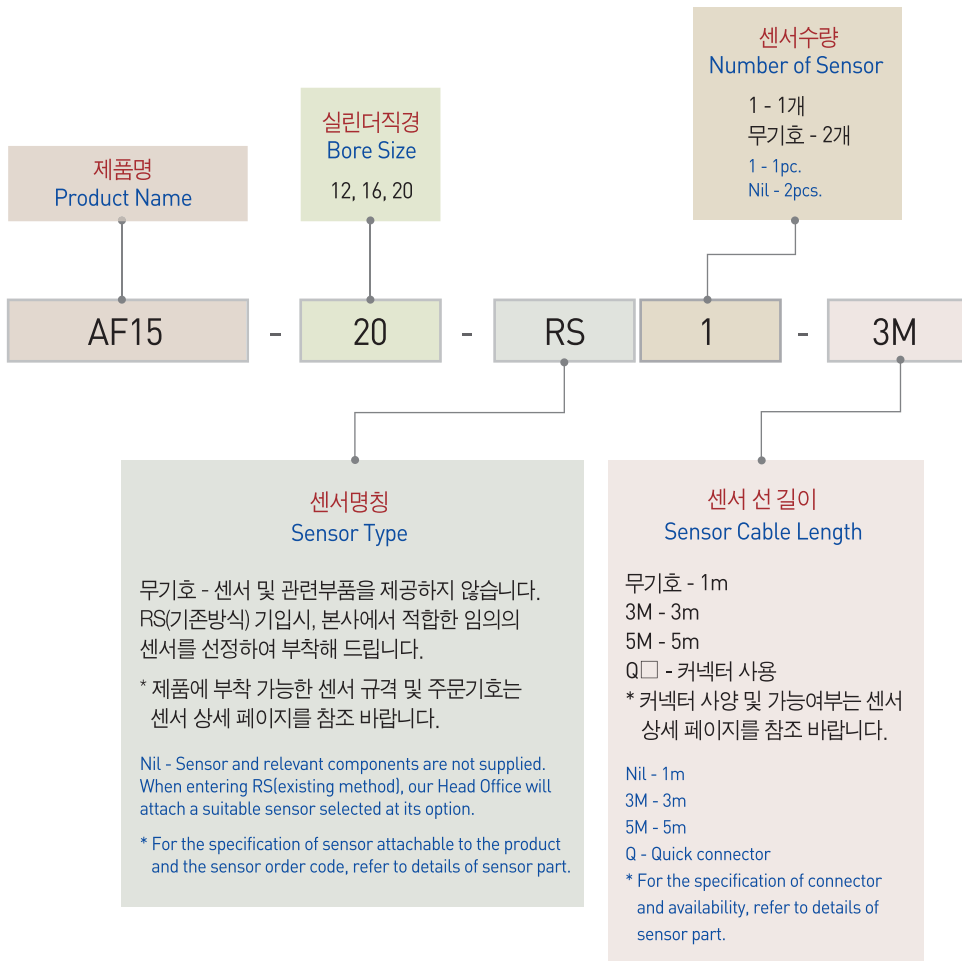
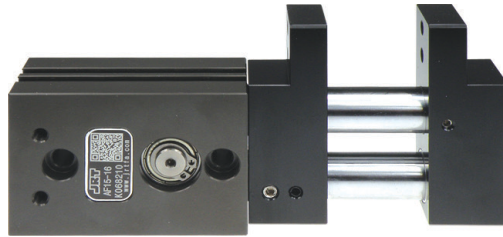


**부품분해도** ※ 본 분해도는 한 제품을 예시하였으므로 기종별로 차이가 있을 수 있습니다



AF101
AF02
AF03
AF04P
AF105P
AF06
AF10
AF13
AF13C
AF14
<b>AF15</b>
AF316
AF17
AF117
AF19
AF24
AF26
AF28D
AF30
AF30L
AF30SP
AF40
AF46
AF56N
RAF56N
MF16

주문기호 ( Ordering Code )



## ☐ 제품사양 ( Specification )

P=공기압력(bar) , L=작동점까지의 거리(mm)  
P=Air Pressure(bar) , L=Exertion length(mm)

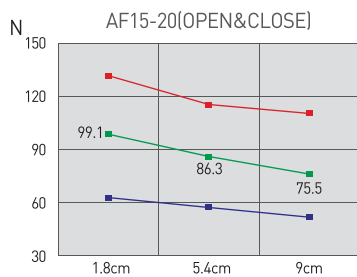
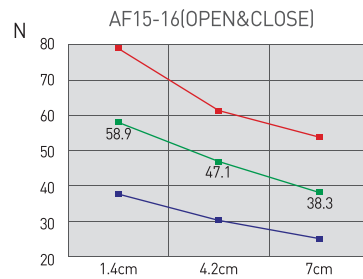
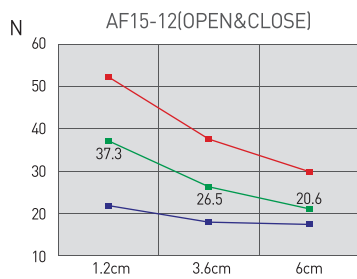
제품명칭 Products Name	AF15-12	AF15-16	AF15-20	단위 Unit
개폐범위 Stroke	20	30	36	mm
제품중량 Weight	0.43	0.81	1.6	kg
최대치구길이 Max. length attach	60	70	90	mm
배관접속구 Fitting size	M5	M5	M5	
파지력 : 열림시 Gripping force : Open	46.11P/(5+0.1L)	107.91(P+0.7)/(9+0.1L)	392.4(P+1)/(22+0.1L)	N
파지력 : 닫힘시 Gripping force : Close	46.11P/(5+0.1L)	107.91(P+0.7)/(9+0.1L)	392.4(P+1)/(22+0.1L)	N
1사이클당 공기소모량 Air consumption per cycle	1.1	3.0	5.7	cm <sup>3</sup>
닫힘시/열림시 시간 Closing / Opening time	0.01/0.01	0.01/0.01	0.01/0.01	sec
반복정밀도 Repeat accuracy	0.05	0.05	0.05	mm
연속사용회수 Continuation usage amount	60	40	40	cpm
사용압력 Operating pressure		3~7		bar
주위온도 Ambient temperature		-5 to 60		℃
윤활 Lubrication		불필요 Needless		

- AF101
- AF02
- AF03
- AF04P
- AF105P
- AF06
- AF10
- AF13
- AF13C
- AF14
- AF15**
- AF316
- AF17
- AF117
- AF19
- AF24
- AF26
- AF28D
- AF30
- AF30L
- AF30SP
- AF40
- AF46
- AF56N
- RAF56N
- MF16

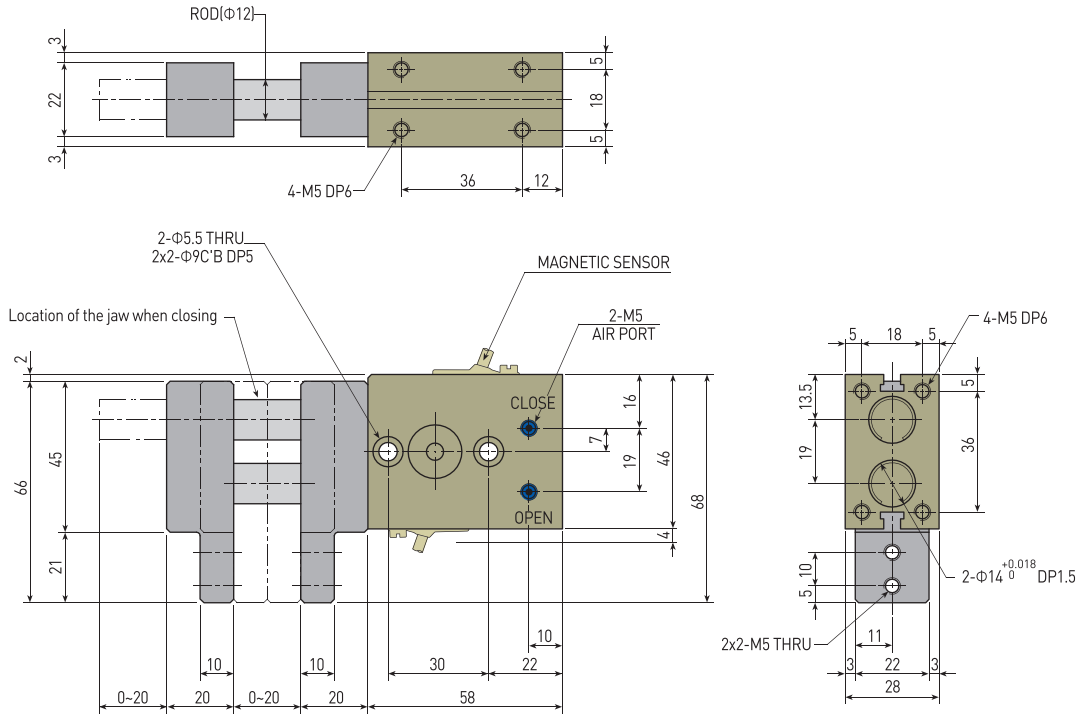
반복정밀도 : 연속 100회 작동후 측정치  
After 100 consecutive strokes to end positions

## ☐ 작용점에서의 파지력 ( Gripping Force From a Point of Action )

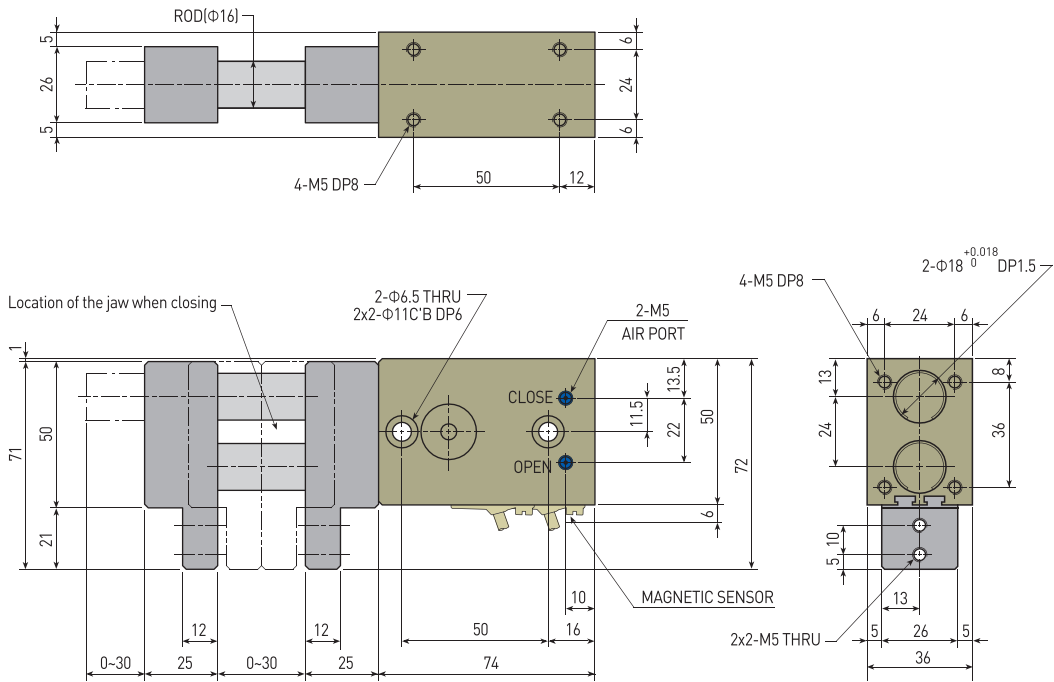
범례( Legend ) : —■ 7[bar] —■ 5[bar] —■ 3[bar]



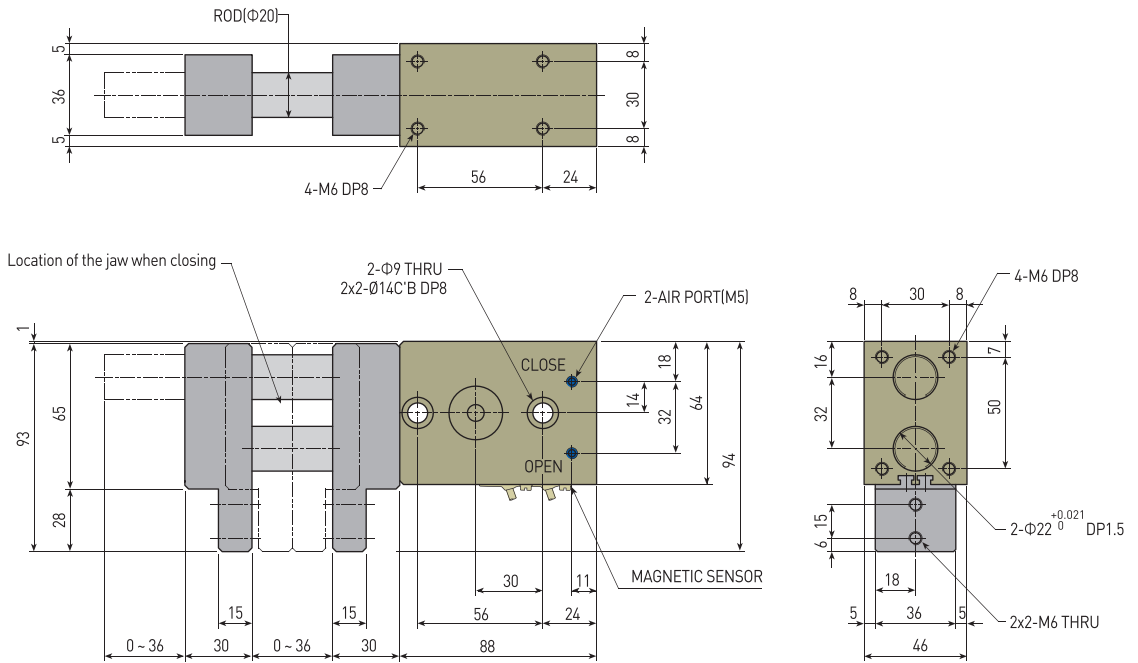
AF15-12



AF15-16



AF15-20



NOTE

- AF101
- AF02
- AF03
- AF04P
- AF105P
- AF06
- AF10
- AF13
- AF13C
- AF14
- AF15**
- AF316
- AF17
- AF117
- AF19
- AF24
- AF26
- AF28D
- AF30
- AF30L
- AF30SP
- AF40
- AF46
- AF56N
- RAF56N
- MF16